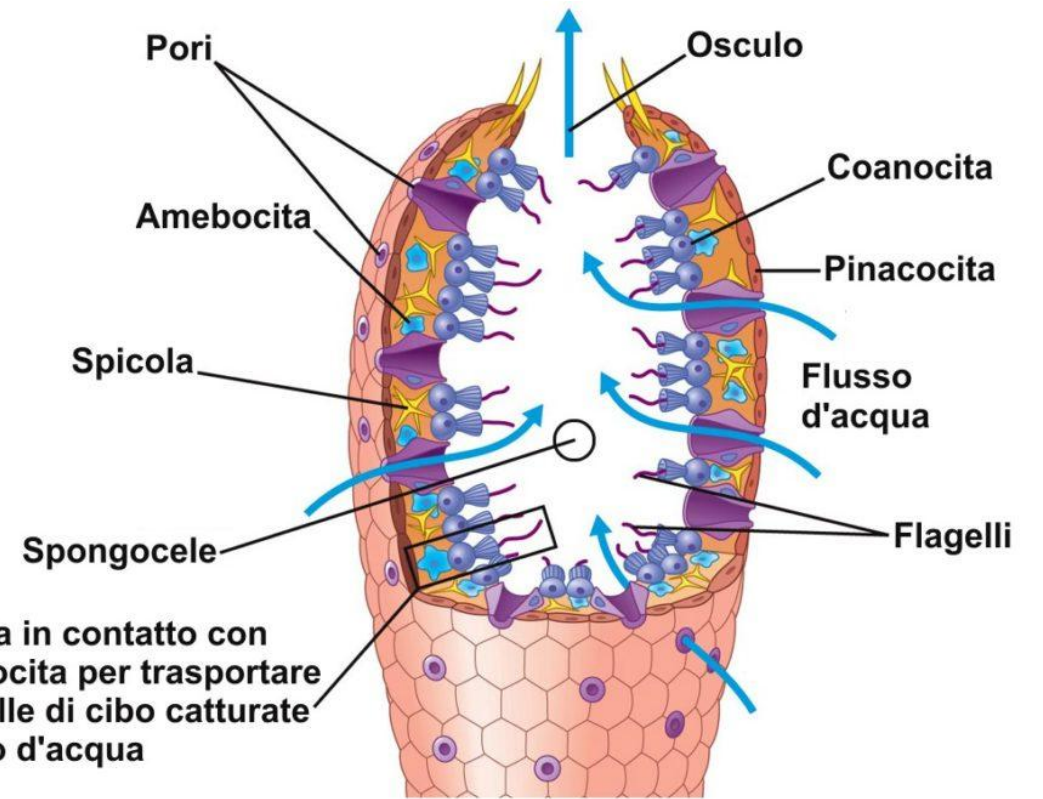
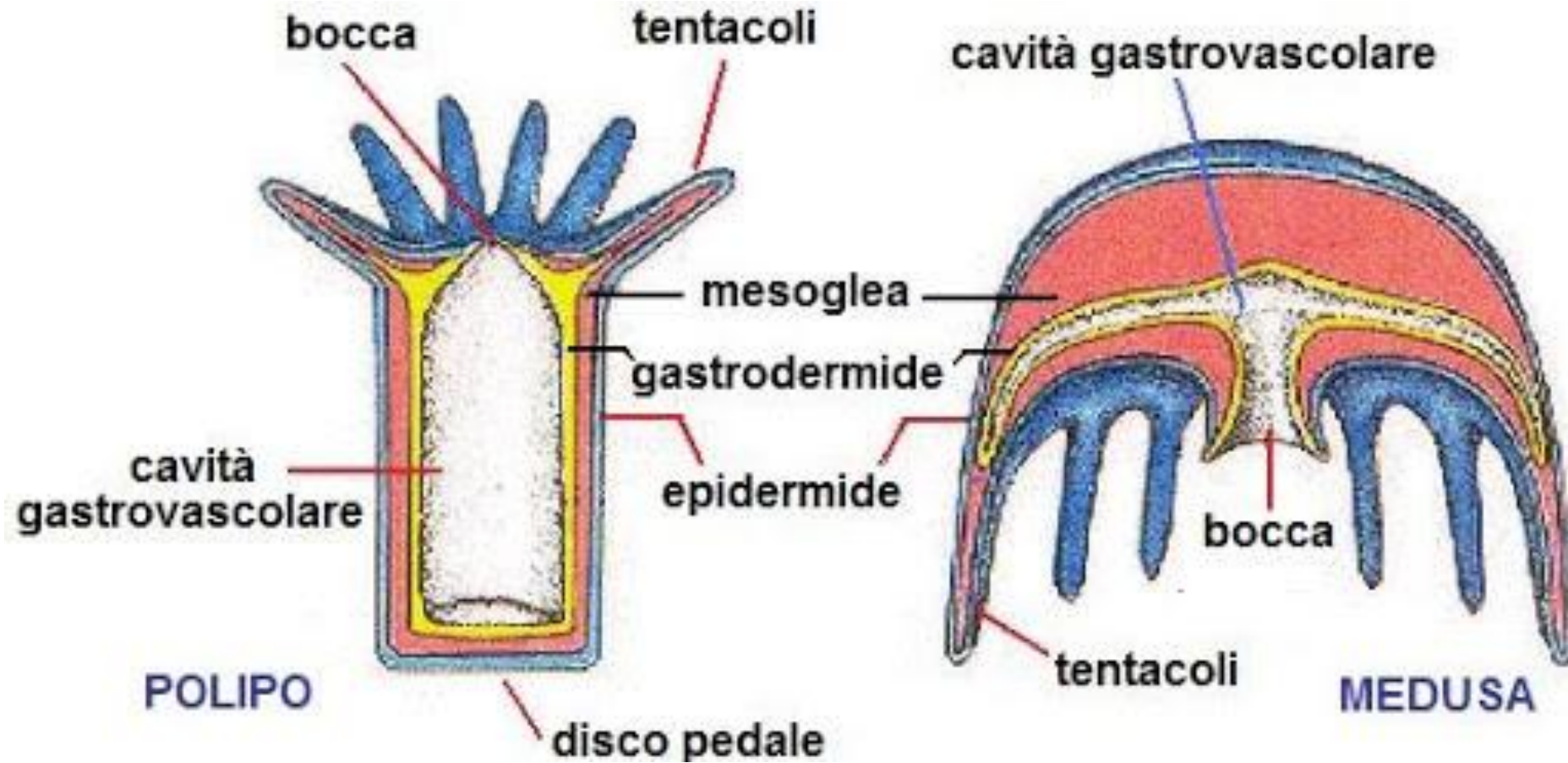


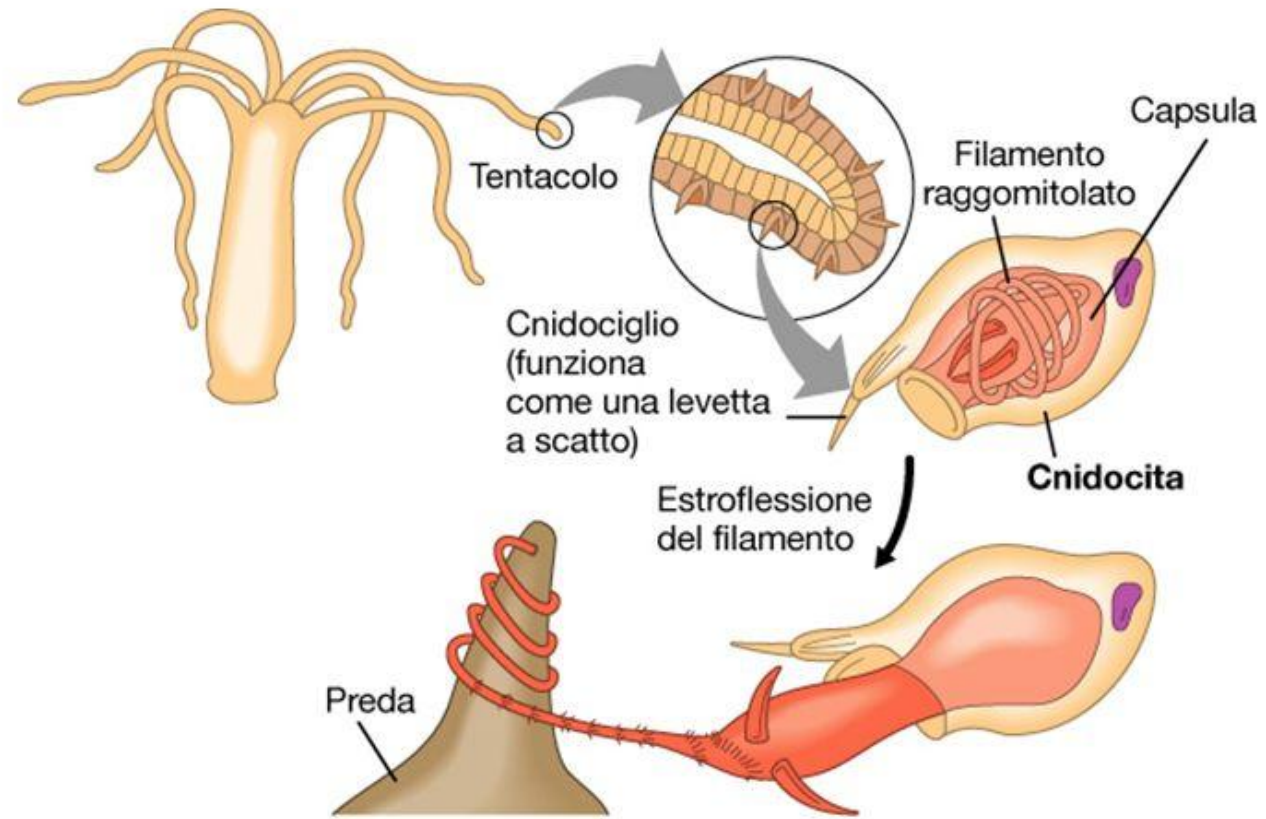
↑ Figura 4

Poriferi (Spugne)



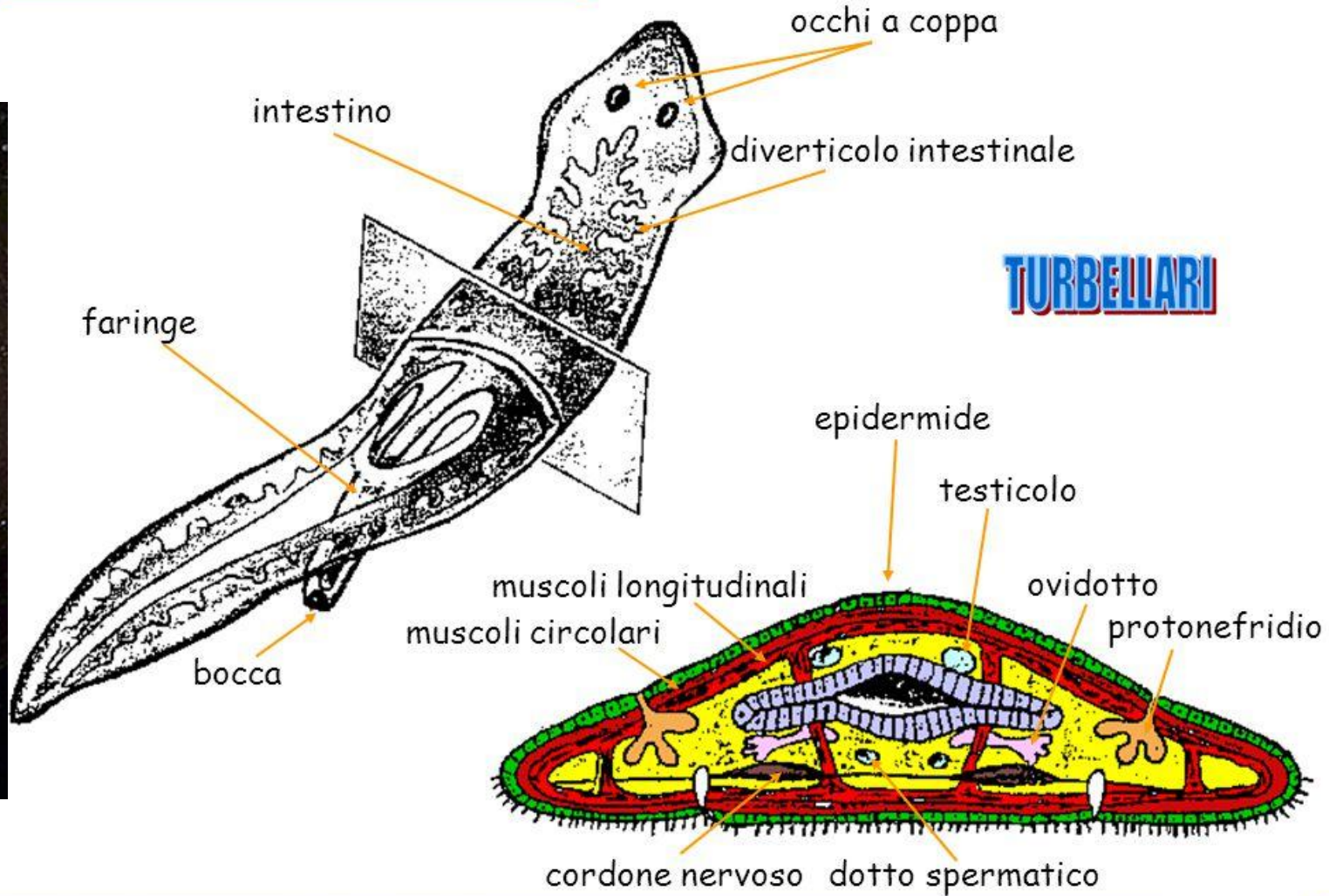
Cnidari (Celenterati)



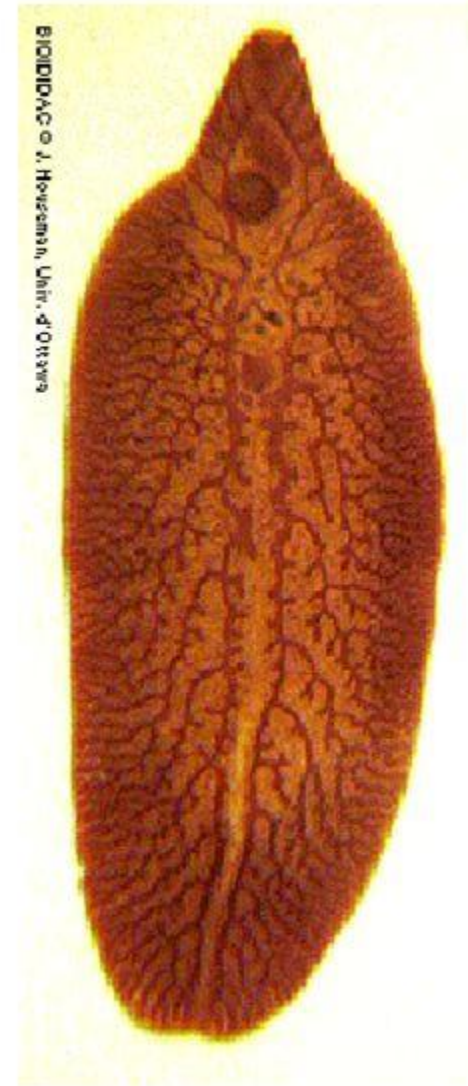
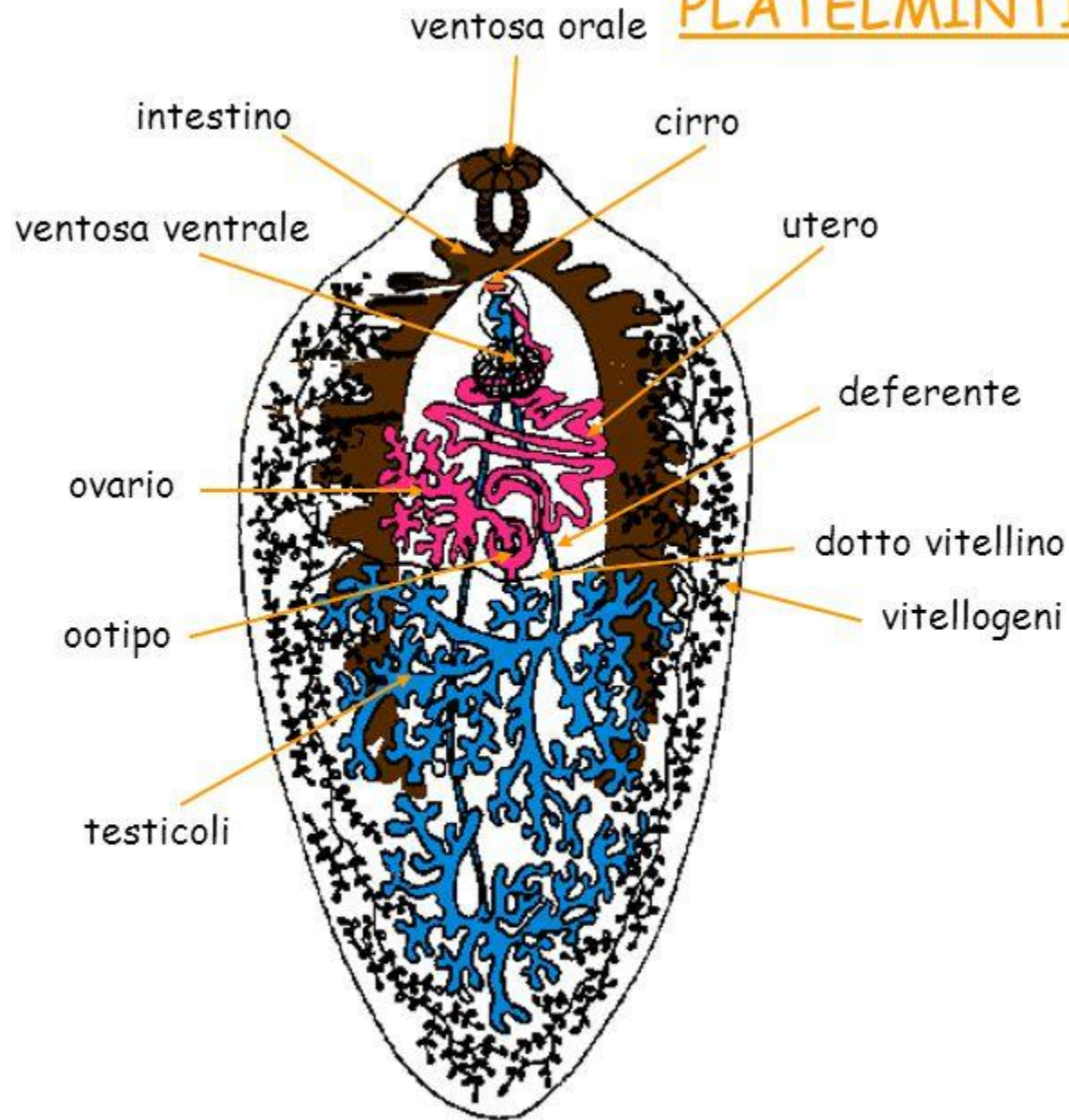




PLATELMINTI - Turbellari: struttura

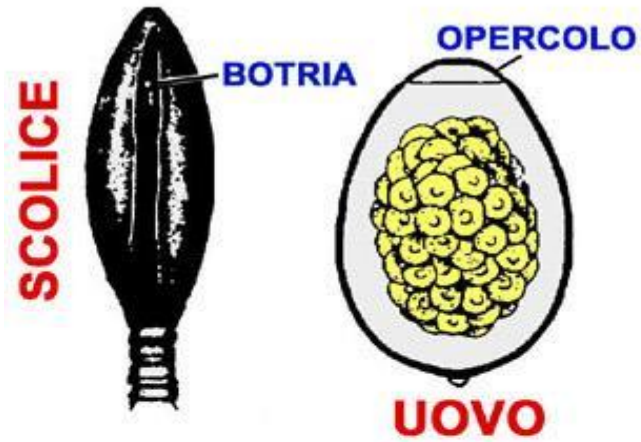


PLATELMINTI - Trematodi: struttura

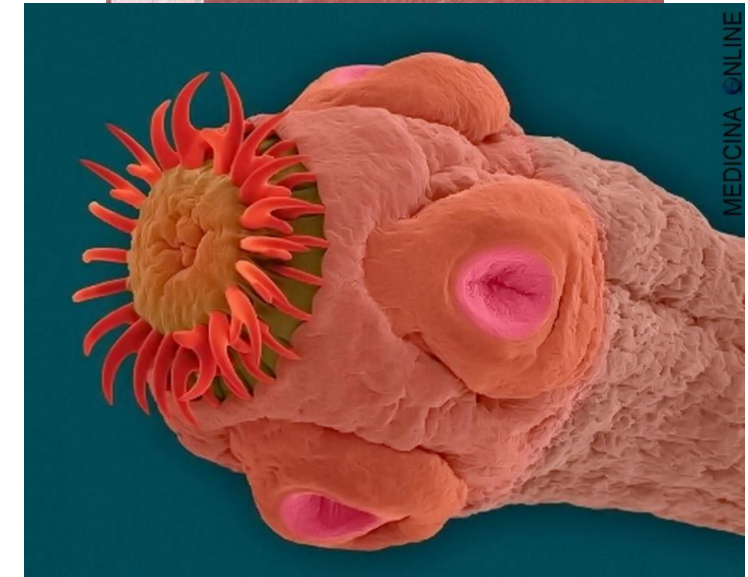
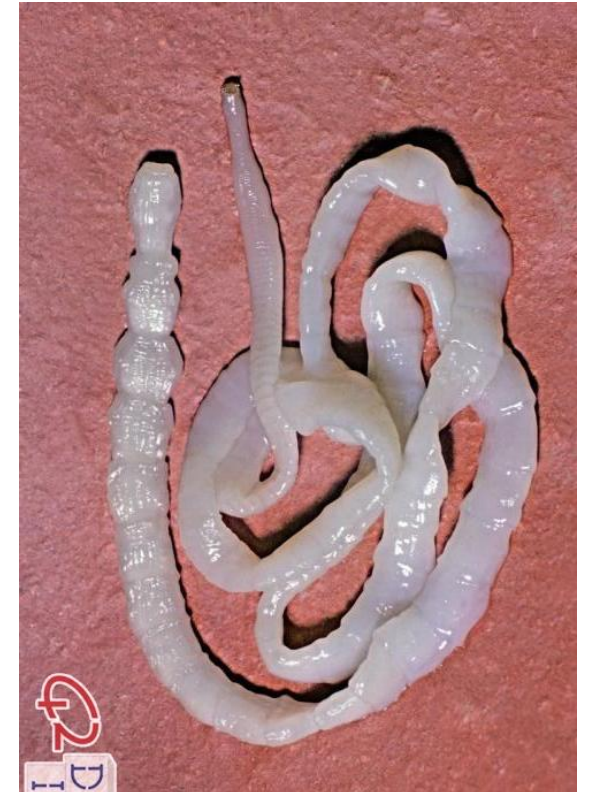
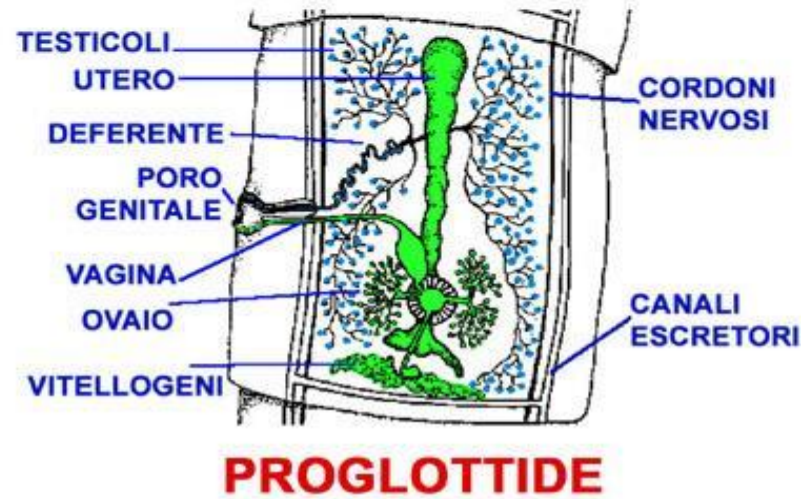


Platelminti Cestodi

PSEUDOFILLIDEO



CICLOFILLIDEO





Nematodi

Animali Pseudocelomati

nematodi

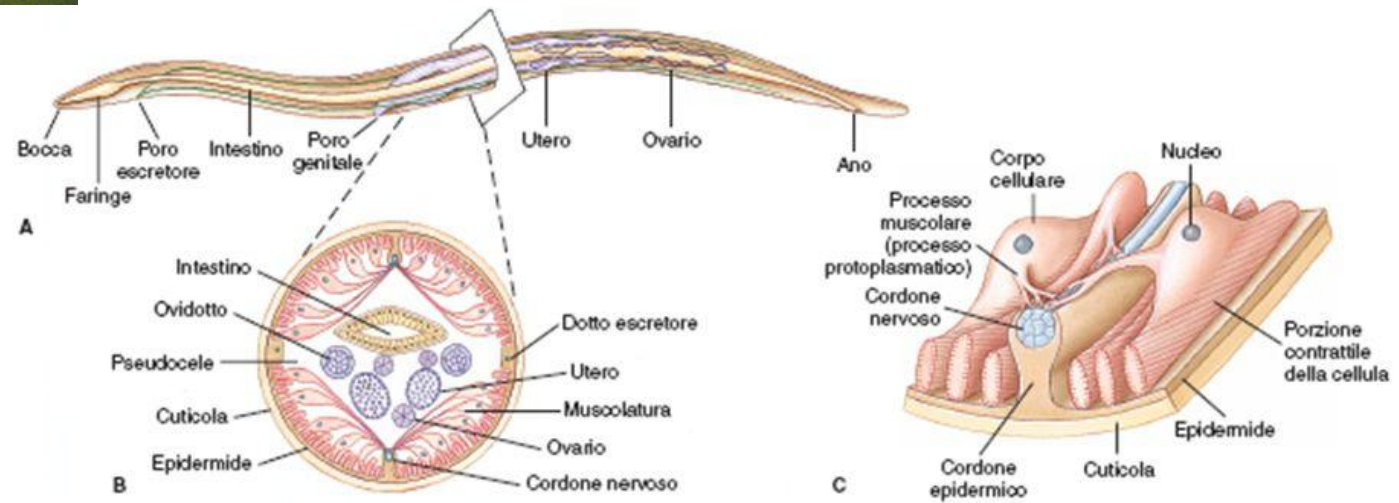


figura 9.6

A, struttura di un nematode illustrata in una femmina di *Ascaris*. *Ascaris* possiede due ovarii e due uteri che si aprono all'esterno mediante un poro genitale comune. **B**, sezione trasversale. **C**, relazione delle cellule muscolari con il cordone epidermico.

MOLLUSCHI



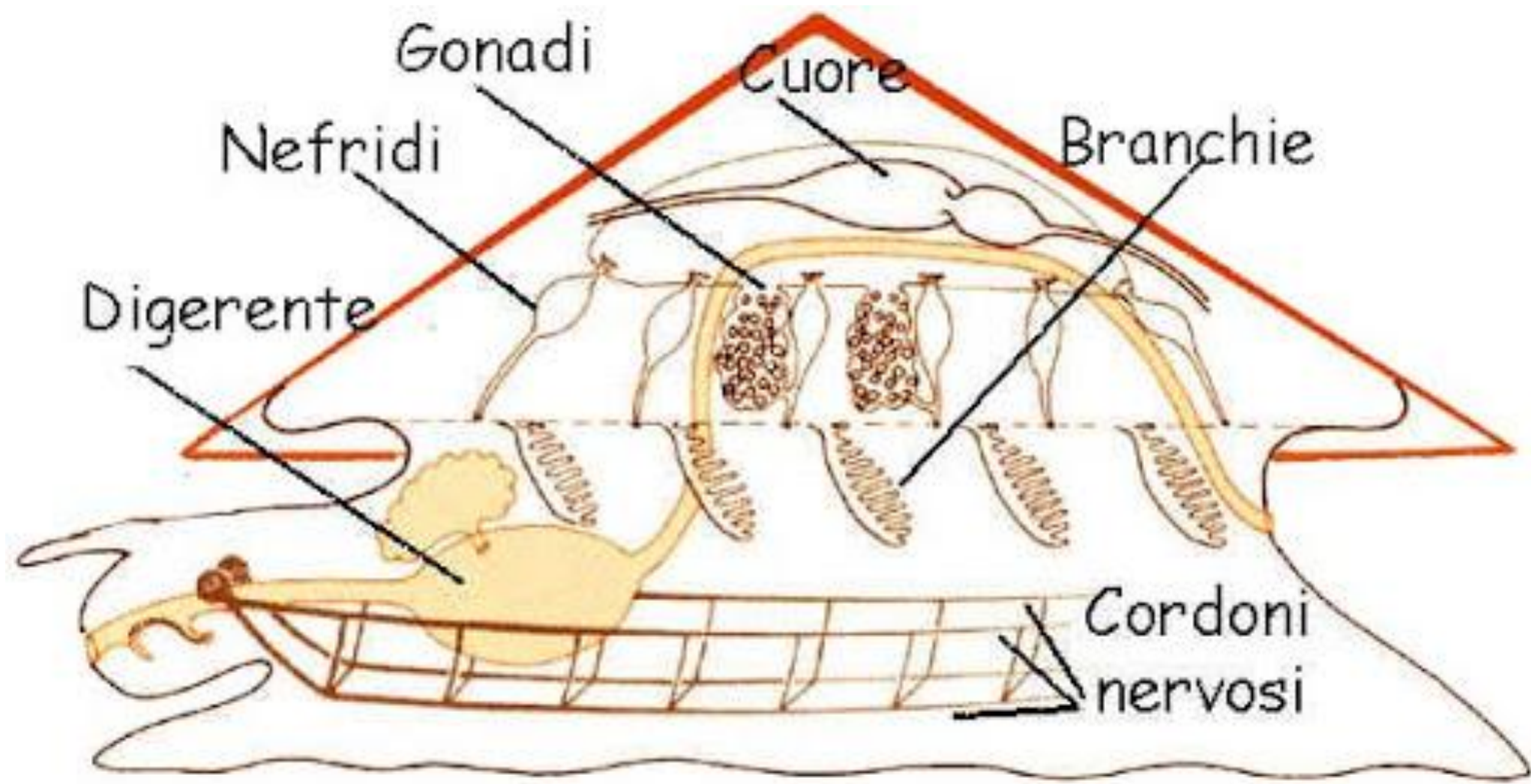
Gasteropodi

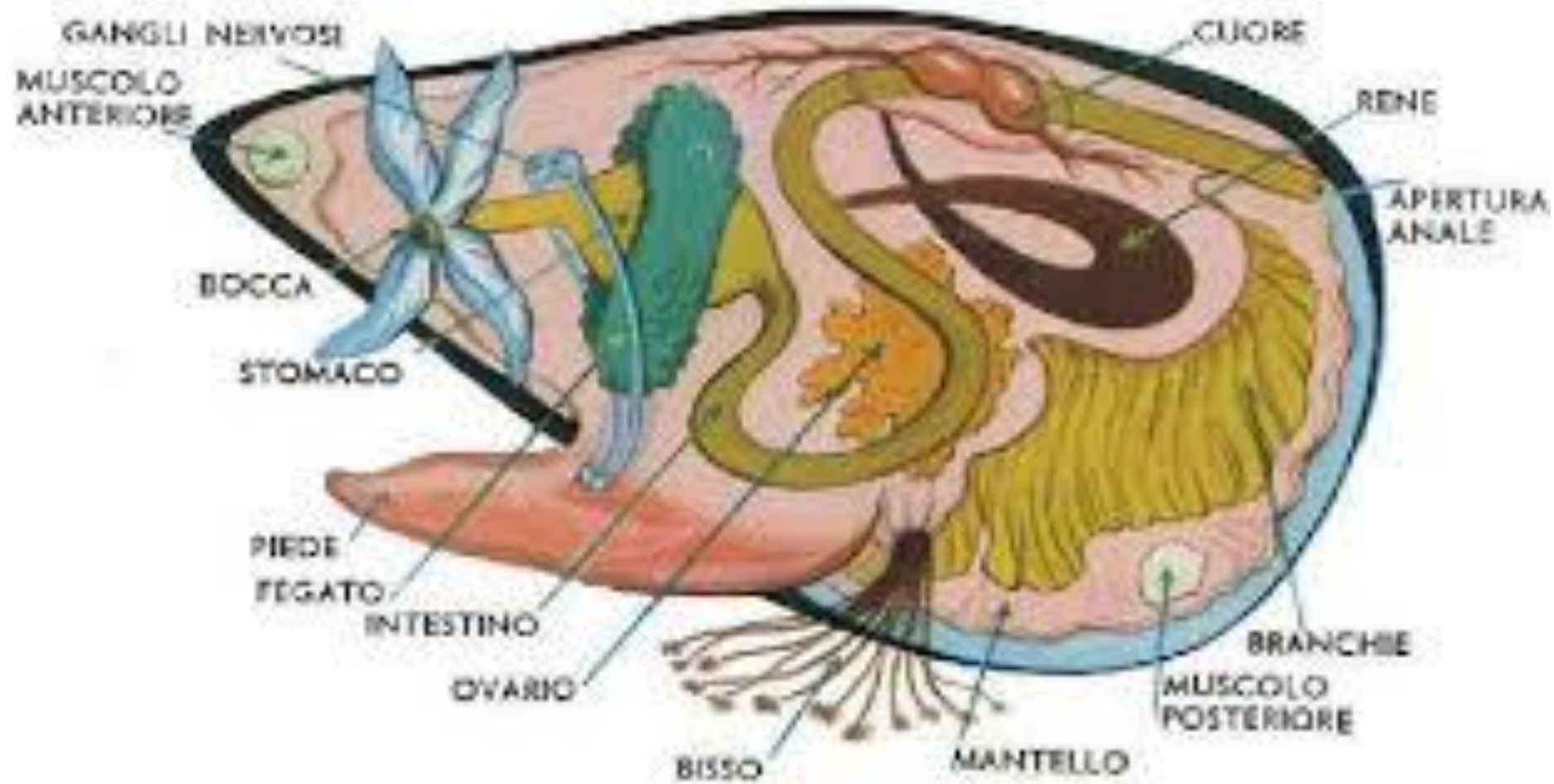


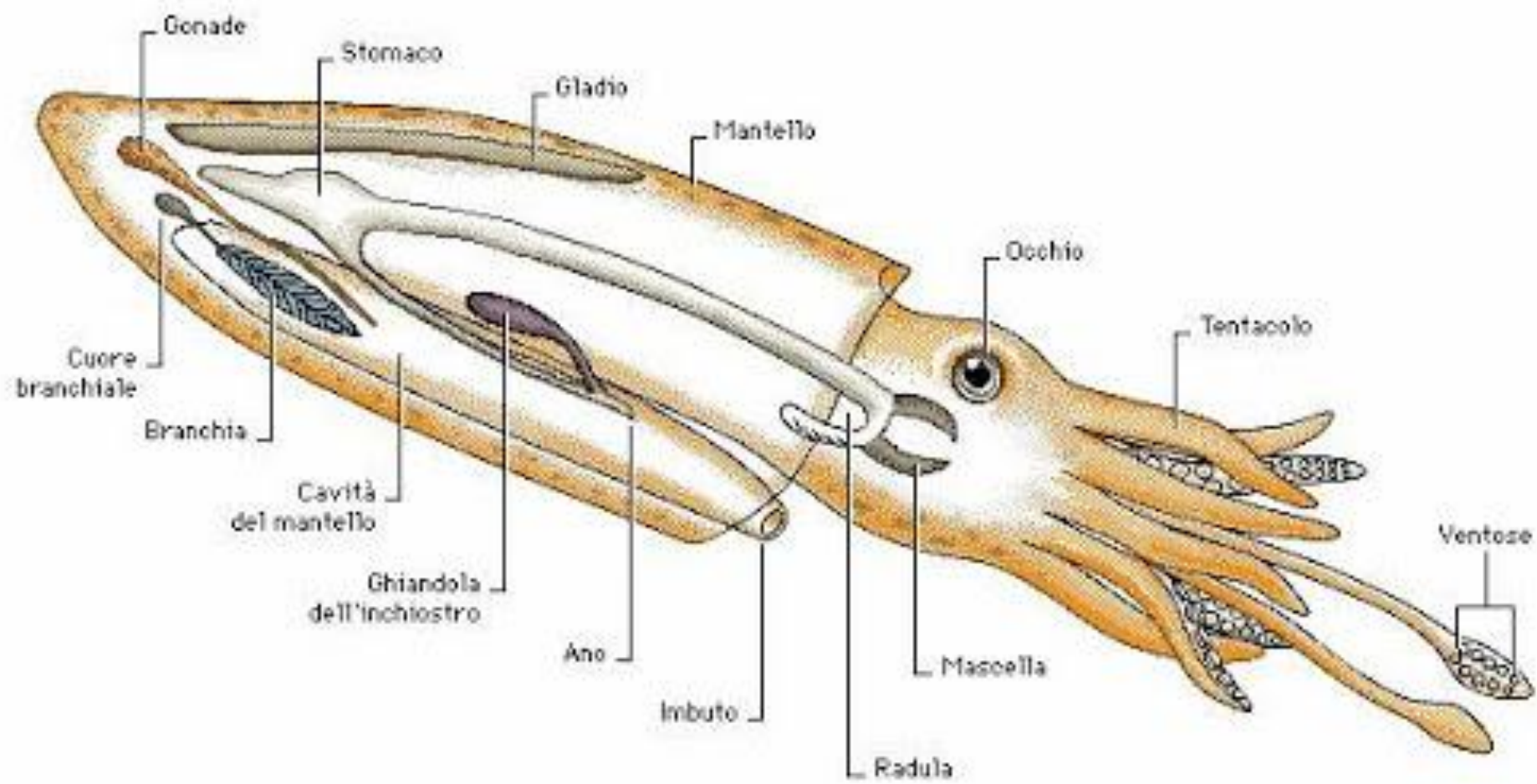
Bivalvi

Cefalopodi











Oligocheti

ANELLIDI

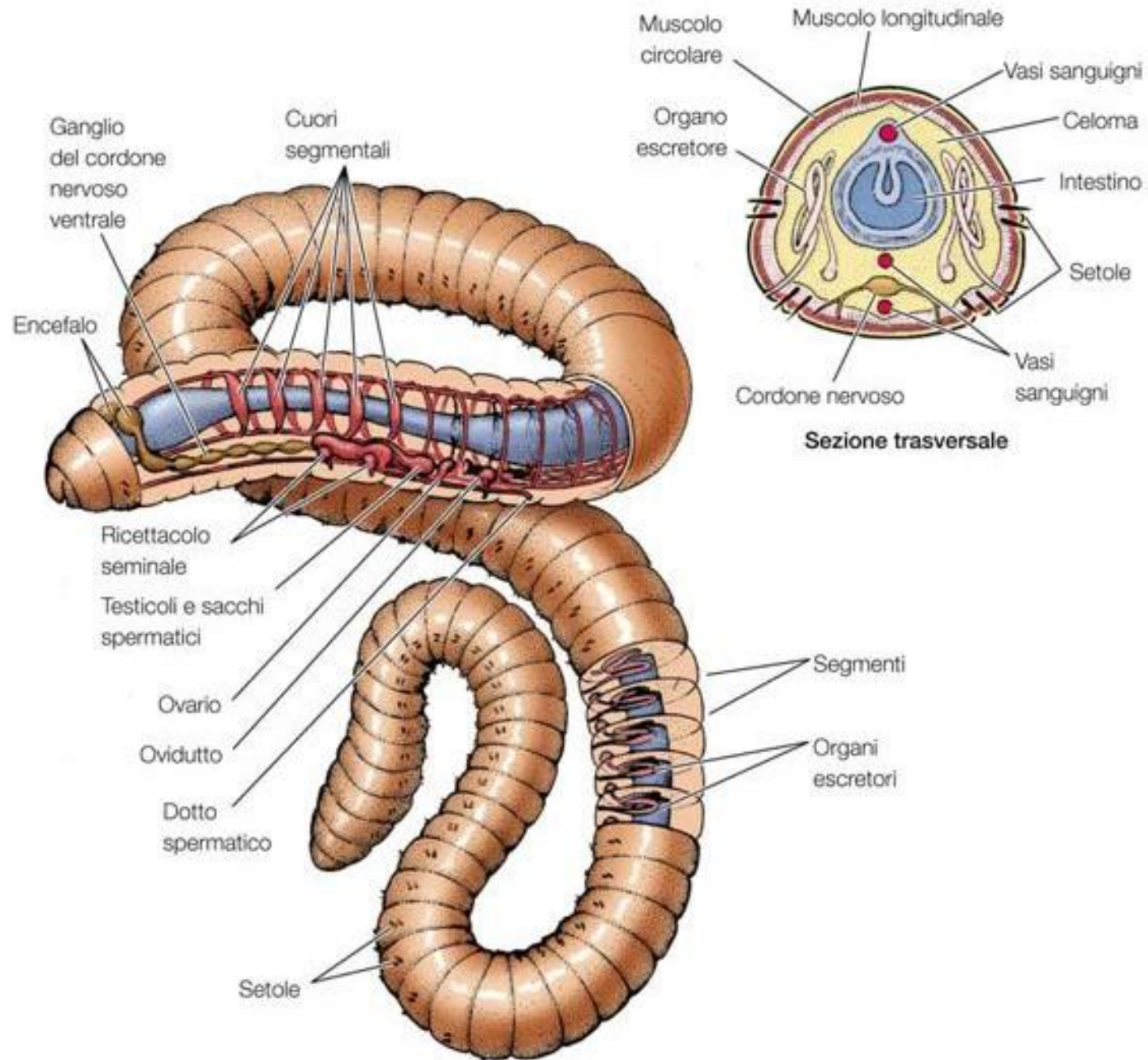


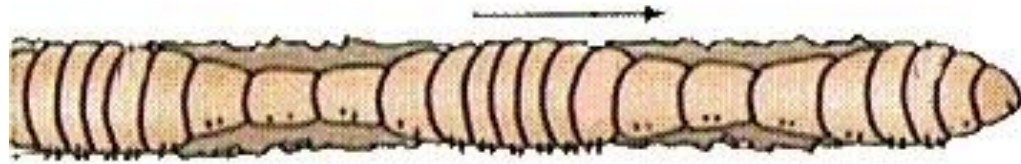
Irudinei



Policheti







ARTROPODI

Chelicerati



Aracnidi



Scorpioni

ARTROPODI

Mandibolati



Chilopodi



Foto Luciana Bartolini

Diplopodi

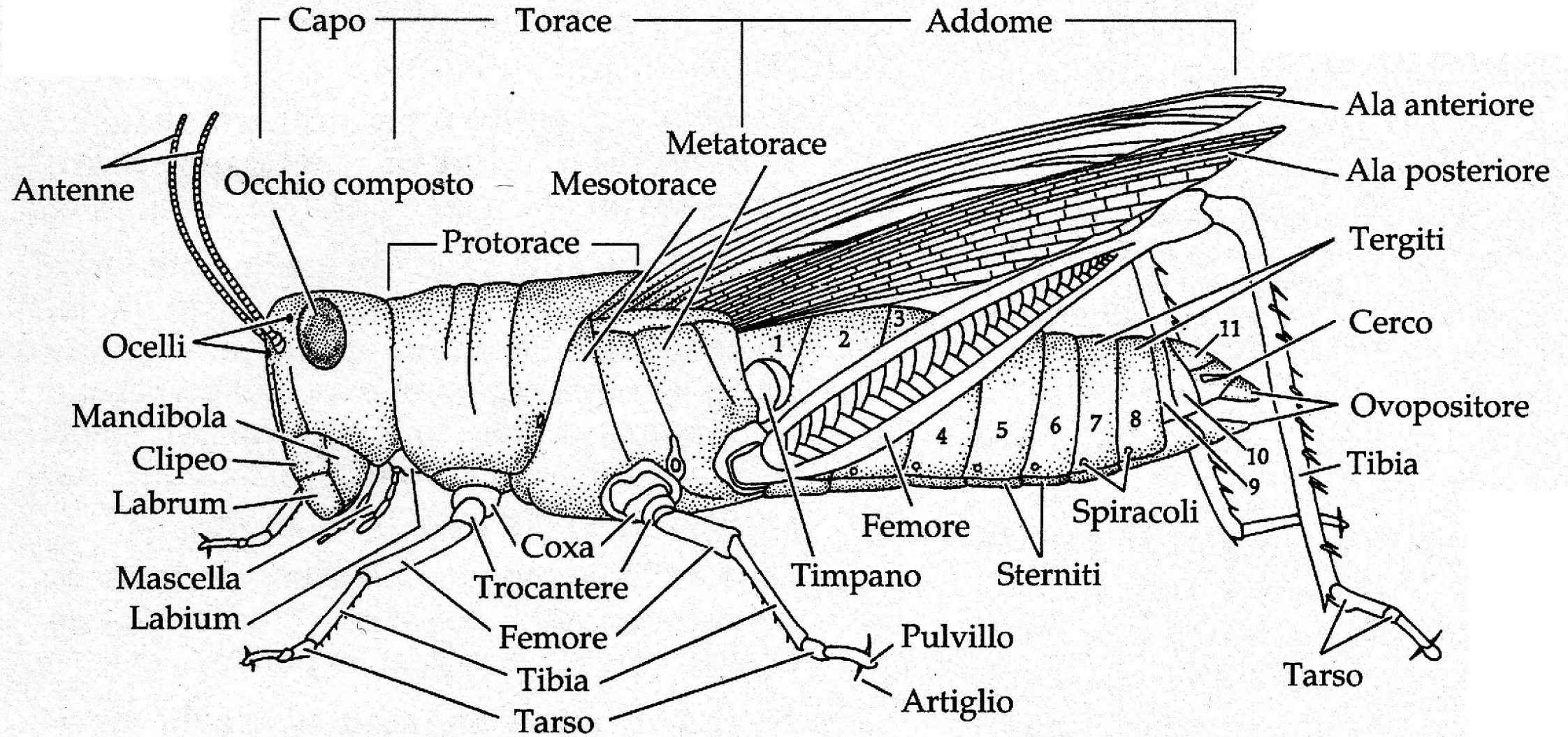
Miriapodi

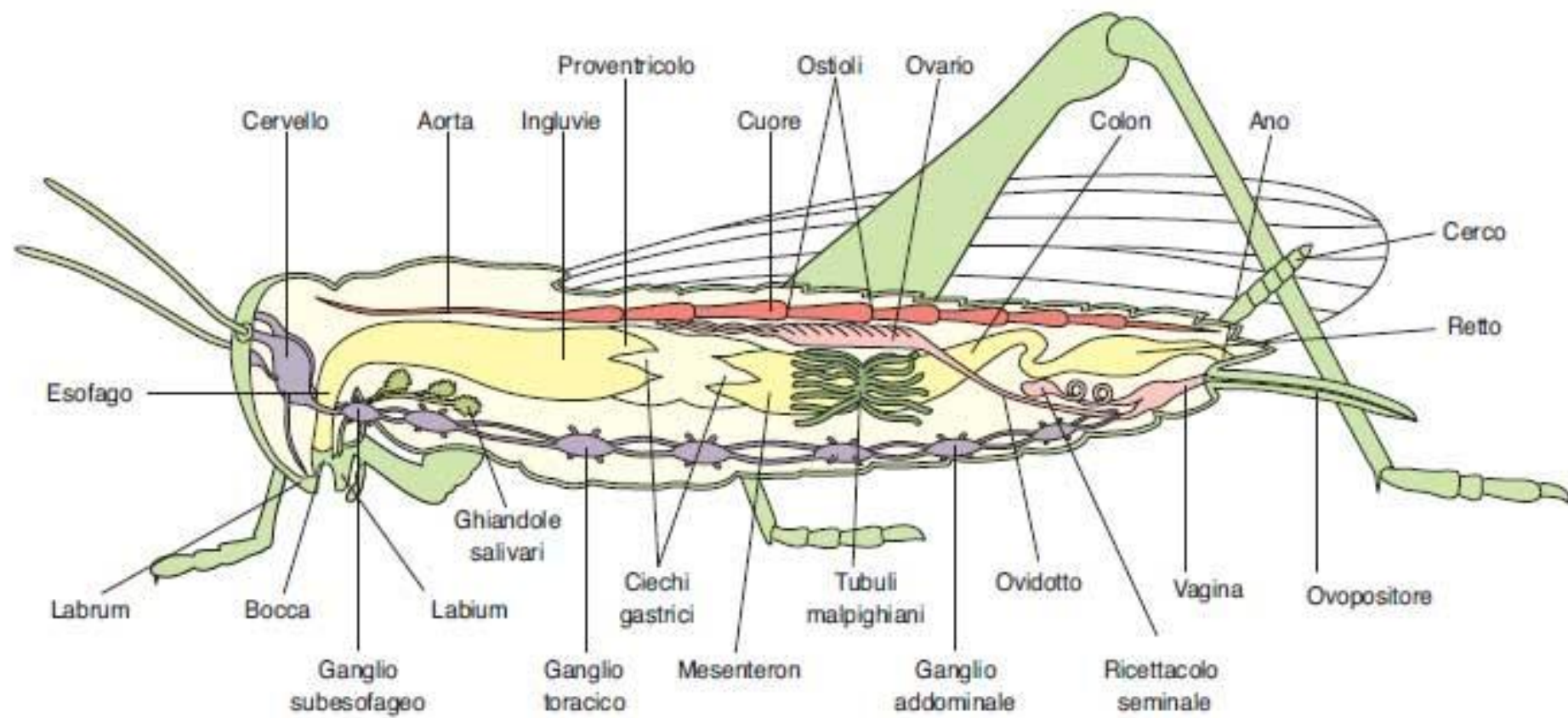


Crostei

Insetti









Echinoidi



Asteroidi

ECHINODERMI



Oloturoidi



Crinoidi

Sea star anatomy and behavior (1)

